

STATESMAN

kitchen appliances



F1230APWE
50CM 80/20 FRIDGE FREEZER WHITE

Instruction Manual

Please read these instructions carefully before use and retain for future reference.
Before switching on your appliance – always check for any damage that may have been caused in transit.

CONTENTS

Important Safety Instructions	3-4
Specifications	5
Appliance Overview	6
Installation	7-10
Operating Instructions	11
Cleaning and Maintenance.....	12-15
Trouble Shooting Guide.....	16
Fuse Replacement	17
Disposal Information	18
Statesman Warranty Information.....	19

IMPORTANT SAFETY INSTRUCTIONS

Read and follow all of the instructions even if you feel you are familiar with the product, and find a place to keep this manual handy for future reference.

Important: This product is intended for domestic use only, for food refrigeration storage only. When using electrical appliances, basic safety precautions should always be followed:

- Do not operate the appliance with a damaged cord or plug, after it malfunctions or has been dropped or damaged in any way. All electrical repairs must be carried out by a qualified electrician. Inadequate repairs may result in a major source of danger for the user and invalidate the warranty.
- Check the voltage of the appliance matches the household voltage, which is located on the rating label.
- Use of an extension cord is not recommended with this product.
- This appliance can be used by children aged from 8 years and above if they have been given supervision or instruction concerning the use of the appliance in a safe way and understand the hazards involved.
- Cleaning and user maintenance shall not be made by children.
- Keep the appliance and its cord out of the reach of children.
- Children shall not play with the appliance.
- Appliances can be used by persons with reduced physical, sensory or mental capabilities or lack of experience and knowledge if they have been given supervision or instruction concerning use of the appliance in a safe way and understand the hazards involved.
- Always unplug the appliance before attempting to move. When disconnecting from the electricity supply, pull the plug and not the cord.
- This product is for indoor use only.
- Do not store explosive substances such as aerosol cans with a flammable propellant in this appliance.
- Always keep the ventilation openings clear of obstruction. Should they become blocked, clear them straight away.
- The refrigerant of this product is R600a which is flammable. Ensure when moving the appliance or during installation that the cooling system does not get damaged.



WARNING: The appliance is heavy and care is needed when unpacking and moving it. Get extra help and only hold the appliance by the casing – never hold by the door or the trim.



WARNING: Risk of child entrapment.

Before disposal of the old appliance, make sure that any locking mechanisms have been broken off, doors have been removed but shelves have been left in so that children cannot easily climb inside. Also remove the plug so the appliance is unusable.

The table below contains general guidelines on the storage of food in refrigerated appliances.

Compartment	Type of Food
Balcony Shelves	Foods with natural preservatives such as jams, juices, drinks and condiments.
	No perishable foods.
Salad Crisper Drawer	Fruits, herbs and vegetables.
	No bananas, onions, potatoes or garlic.
Top Fridge Shelf	Pre-cooked foods such as ready-to-eat meals, deli meats and leftovers.
Middle Fridge Shelf	Dairy products and eggs.
Bottom Fridge Shelf	Raw meat, poultry and fish (only for a short-term).
Freezer Drawers	Foods for long-term storage.
	Top drawer - ice cream, frozen fruit and frozen baked goods.
	Middle drawer - frozen vegetables chips.
	Bottom drawer - raw meat, poultry and fish.

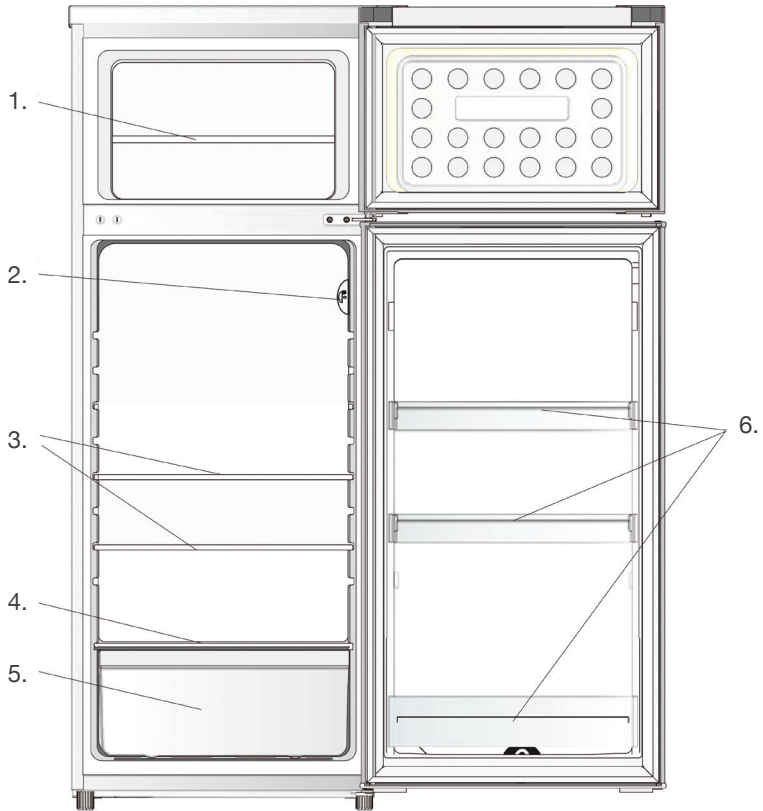
SPECIFICATION

Supplier Name / Trade Mark	Statesman
Model Number	F1230APWE
Category Type	Refrigerator with Freezer
Energy Efficiency Class	E
Annual Energy Consumption	177kWh/year
Freezing Capacity (kg/24h)	2.4
Fridge Storage Volume (Litre and Applicable Star Rating Compartment)	112
Freezer Storage Volume (Litre)	39
Applicable Star Rating Compartment	4 Star
Refrigeration System (Frost Free, Static, Totally No Frost)	Static
Temperature Rise Time	11hrs
Climate Class	N
This appliance is intended to be used at an ambient temperature between “16” (lowest temperature) °C and “32”(highest temperature) °C	
Noise Emission (dB)	40dB
Built-in Appliance	N/A
Wine Storage Appliance	N/A
Voltage (V)	220-240V~
Wattage Power (W)	100W
Frequency (Hz)	50Hz
Power Source	AC

Ambient Room Temperature Limits

Class	Symbol	Ambient average temperature °C
Extended temperature	SN	+10 to +32
Temperature	N	+16 to +32
Subtopical	ST	+16 to +38
Tropical	T	+16 to +43

APPLIANCE OVERVIEW



- 1. Freezer Shelf
- 2. Thermostat and Light
- 3. Glass Shelves
- 4. Salad Drawer Cover
- 5. Salad Drawer
- 6. Balcony Shelves

INSTALLATION

Location and Air Circulation

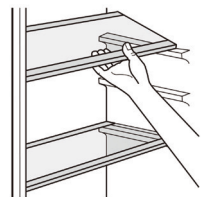
- The appliance must stand vertically on a flat, even surface, to level the appliance use the levelling feet by turning them until the appliance is as level as possible.
- It is not recommended to stand the appliance on a carpeted surface.
- This appliance has been designed to operate in ambient temperatures between 16°C and 32°C.
- It is not recommended to place this appliance in a room where the temperature is likely to drop below 5°C for prolonged periods, as the internal appliance temperature will not be maintained.
- The appliance should be at least 50cm away from sources of heat e.g. radiators, direct sunlight, gas ovens, stoves and 5cm away from electric cookers as extreme temperatures will affect the performance of your appliance.
- Allow 5cm of clearance space at the sides of the appliance and 2cm above the appliance.
- It is not recommended to place the appliance directly against the wall, allow at least a 2cm clearance space between the rear of the appliance and the wall.
- It is not recommended to place the appliance next to a deep freezer, there should be at least 5cm between them to prevent humidity on the outer surface.
- Do not expose the appliance to damp conditions, open air or rain.
- Do not lift the appliance by the pipes or the door when moving.
- It is not recommended to place the appliance in a wall recess, fitted cabinet or furniture as this will not allow adequate ventilation and cause a potential fire hazard.

Providing you follow the recommended ventilation requirements you will:

- Increase the life of the appliance.
- Minimise the risk of condensation on the outside of the appliance.
- Minimise operating noises caused by vibration.

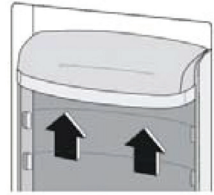
Adjustable Shelves

The walls of the refrigerator are equipped with a series of runners so that the shelves can be specifically positioned.



Balcony Shelves

The position of the balcony shelves can also be adjusted. Gradually pull the balcony in the direction of the arrows until it comes free. Then reposition and insert.



Reversing the Doors

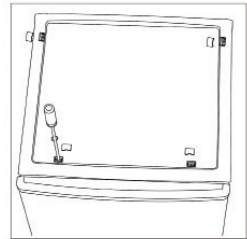
The appliance doors can be fitted to open to either the left or the right depending on its location. The appliance will have to be tilted and supported in order to carry this out. It is advisable to get some help during this procedure.

Important: Do not lay the appliance flat as this may damage the coolant system. Take care when fitting and tightening screws.

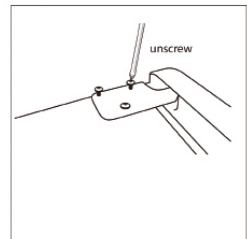
To change the direction of the door, please follow these instructions:

1. Ensure the appliance is unplugged and empty.
2. Remove the top cover of the appliance by unscrewing the four screws – this will allow you to gain access to the hinges.
3. Unscrew the 3 screws from the top hinge and then lift the hinge to remove. The top door can now be removed and stored safely.
4. Remove the pin from the hinge bracket with a screwdriver, flip the bracket over 180° and then refit the pin back into the hinge bracket. Place the hinge bracket in a safe place

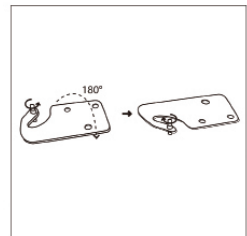
2.



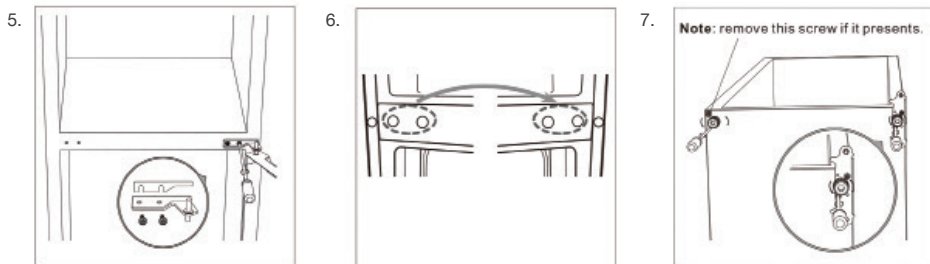
3.



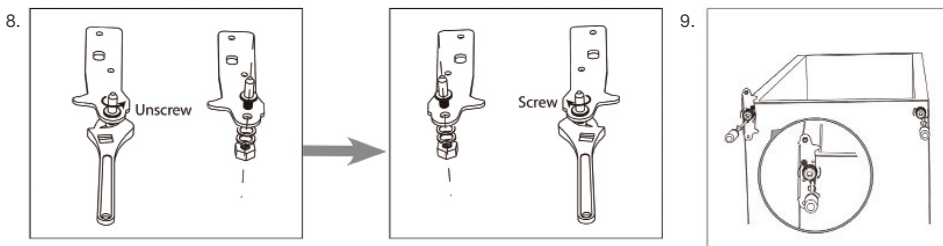
4.



5. Unscrew the middle hinge and then remove, the lower door can now be removed and stored safely.
6. Move the hinge hole covers from left side to right side.
7. Unscrew bottom hinge and then remove the levelling feet from both sides.

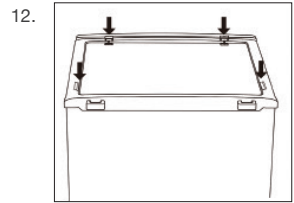
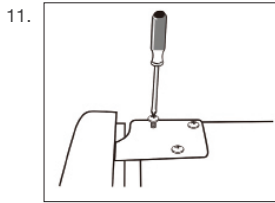
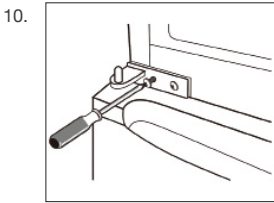


8. Unscrew and remove the bottom hinge pin, flip the bracket over 180° and then refit the pin back into the hinge bracket
9. Refit the hinge bracket to the bottom of the appliance on the opposite side. Replace both levelling feet. Replace the lower door onto the lower hinge



10. Re-install and secure the middle hinge on the opposite side
11. Replace the top door onto the middle hinge. Ensure the door is aligned horizontally and vertically so that the seals are closed on all sides before finally tightening the top hinge. Then refit the hinge bracket to the top of the appliance

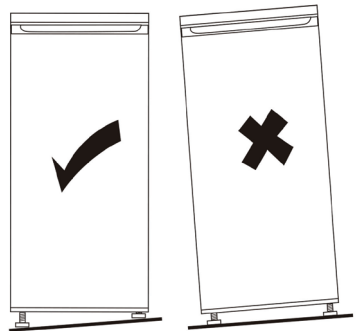
12. Re-install the top cover using the 4 screws
13. Re-adjust the levelling feet to minimise operation noises caused by vibration
14. Allow 5 hours for the appliance to stand upright before turning on the appliance to allow coolant gases time to settle after the appliance is in place



Leveling the Unit

To do this adjust the two levelling feet at the front of the unit.

If the unit is not level then the doors and the magnetic seal may not align correctly and so it may not seal. This can lead to a rise in internal temperature and the food not being refrigerated correctly.



OPERATING INSTRUCTIONS

Before using your Appliance

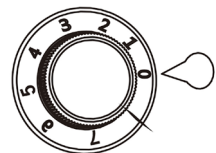
- Allow the appliance at least 24 hours before storing any food inside to allow for sufficient cooling temperature to be reached.
- The interior of the appliance needs to be cleaned prior to use by wiping with a soft cloth and using warm water. Wipe the appliance completely dry before replacing any shelves or drawers.

Using your Appliance

- Once dry, plug the appliance into the mains socket.
- Avoid opening the door for long periods or unnecessarily.
- To maintain adequate air circulation, do not over fill the appliance.
- Every drawer and cooling section is designed to take a maximum of 20kg.
- Allow hot or warm foods to cool to room temperature before storing in the appliance.
- Keep the food packed, wrapped or covered.
- For hygiene reasons, always wrap food using a suitable packaging material, before storing in your appliance to avoid contact with the surface of the appliance.
- Do not place food directly against the rear wall of the fridge compartment.
- The temperature in the appliances compartments can be monitored by using a fridge freezer thermometer. Do not use a Mercury filled thermometer, as a breakage would cause a health hazard.

Adjusting the Temperature

The internal temperature of the appliance is controlled by a thermostat; this controls both the fridge and freezer compartments.



- Once the appliance is plugged in and turned on the internal temperature can be set using the thermostat. There are 8 settings; 1 is the warmest, 7 is the coldest and 0 is off.
- Note that if the fridge freezer is placed in a warm environment or the door is opened frequently then the appliance will not work as well as intended.

CLEANING AND MAINTENANCE

Switch off the electrical supply and remove the plug from the mains socket before cleaning.

Interior

1. Remove all food from the appliance and cover to help keep cool.
2. Remove all the drawers carefully from the appliance and wash with warm clean water and a soft cloth, then dry thoroughly. Never replace the drawers or shelves whilst still wet.
3. Wipe the interior of the appliance with a damp clean cloth.
4. Dry the interior thoroughly with a clean cloth and replace the shelves and drawers.
5. Plug in and switch on and allow the temperature in the appliance to drop back to an adequate temperature.
6. Replace the food in the appliance.

Important: Avoid getting water into the electric components of the appliance (i.e. the thermostat) as this may damage your appliance.

Defrosting the Fridge

- Defrosting occurs automatically in fridge compartment during operation; the defrosted water will be collected by the evaporating tray and evaporates automatically.
- The drain hole in the rear of the fridge compartment should be kept clear from food and debris to prevent water building up which could result in excess ice formation.

Defrosting the Freezer

After a period of time frost will build up in the freezer compartments. Regular defrosting will therefore be necessary to maintain the efficiency of the appliance. The best time to defrost your appliance is when the amount of food stored is low.

To defrost the appliance, please follow the steps below:

1. Take out the frozen food and store in a spare freezer, appliance or wrap well and store in a cool dry place.

2. Unplug the appliance from the mains supply, making sure not to pull the cord.
3. Leave the door open, to speed up the defrosting process, bowls of warm water can be placed inside the appliance to raise the temperature.
4. Place a shallow bowl or pan below the freezer compartment to catch dripping water.
5. Remove the ice with a plastic ice scrapper. DO NOT use pointed or sharp edged objects such as knives, forks or screwdrivers to remove the ice.
6. When all traces of ice have been removed and defrosting is completed, clean away any water and wipe your appliance dry.
7. Clean your appliance as described below, plug in and switch back on. Set the thermostat to setting 4.
8. Allow at least 5 hours for the appliance to return to the adequate temperature before putting the food back into the appliance.

Important: Do not use any mechanical devices or other means to accelerate the defrosting process other than those recommended by the manufacturer.

Exterior

- Use a clean, damp soft cloth to wipe the exterior surface of the appliance and dry thoroughly.
- Use a vacuum cleaner to remove dust from underneath the appliance and from around the compressor which is situated at the back of the appliance. Do this regularly to maintain adequate ventilation.

Caution! Take care not to damage the coolant system.

Important: Do not use abrasive cloths, powders, household cleaners, bleach or wax polish to clean the appliance as these can leave a smell in the appliance and can damage the exterior.

Door Seal

Use a clean, damp soft cloth to wipe the door seal and in between the creases, avoid damaging the door seal as this will affect the performance of your appliance.

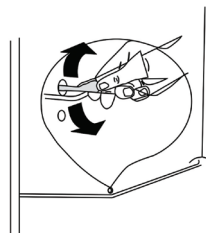
Going Away

If you are going away and do not wish to leave the appliance left on, switch it off at the socket and remove the plug. Ensure not to remove it using the cord. Remove any food and follow the defrost and cleaning instructions in the “Cleaning and Maintenance” section.

Please Note: Leave the door ajar as this will prevent odours and mould accumulating in the appliance and will allow the appliance to dry completely. When returning after a prolonged period, run for at least 2 hours on the highest setting before adding food.

Clearing the Drain

To avoid defrost water overflowing into the fridge, regularly clear the drain hole at the rear of the fridge compartment. Carefully use a set of tweezers and keep the plug in a safe place during drainage.



Power Cut

In the event of a power cut keep the appliance door closed to maintain the temperature inside.

Operating Sounds

The cooling gas which circulates in the cooling circuit may make a slight noise (bubbling sound) even when the compressor is not running. Do not worry this is quite normal.

If these sounds are different check that:

- The appliance is well levelled
- Nothing is touching the back of the appliance.
- The contents of the appliance is not vibrating.

Important! In the event of accidental defrosting reference the “Temperature Rise Time” in the technical specifications table. Food must be consumed within this time frame or cooked to then be frozen.

Thawing

Frozen food can be thawed in the refrigerator compartment but ensure that it is fully defrosted before cooking.

Replacing the Light Bulb

The internal light is a LED lamp. To replace the lamp, please contact a qualified service engineer.

TROUBLE SHOOTING GUIDE

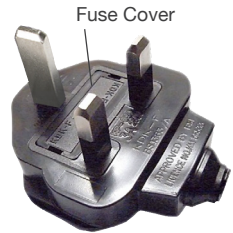
If you are having problems with your appliance, please use our trouble shooting guide below. If you are unable to resolve the issue using this guide please ring our Customer Service Department on 01473 277 508. Please have the model code and purchase information available.

Fault	Possible cause	Solution
Appliance does not work.	Temperature thermostat is set at setting "0".	Set the thermostat to another setting to switch on the appliance.
	Mains plug is not plugged in or is loose.	Insert mains plug.
	Fuse has blown or is defective.	Check fuse, replace if necessary.
	Socket is defective.	Mains malfunctions are to be corrected by an electrician.
The food is too warm.	Temperature is not properly adjusted.	Please look in the "Adjusting the Temperature" section.
	Door was open for an extended period.	Open the door only as long as necessary.
	A large quantity of warm food was placed in the appliance within the last 24 hours.	Turn the temperature thermostat to a colder setting temporarily.
	The appliance is near a heat source.	Please look in the 'Installation' section.
Appliance cools too much.	Temperature is set too cold.	Turn the temperature thermostat to a warmer setting temporarily.
Unusual noises.	Appliance is not level.	Re-adjust the levelling feet.
	The appliance is touching the wall or other objects.	Move the appliance slightly.
	A component, e.g. a pipe, on the rear of the appliance is touching another part of the appliance or the wall.	If necessary, carefully bend the component out of the way.
Water on the floor.	Water drain hole is blocked.	See the 'Cleaning and Maintenance' section.
Side panels are hot.	It's normal. Heat exchange parts are in the sides.	Use gloves to touch sides.

FUSE REPLACEMENT

Fuse Replacement (Class I)

This appliance must be earthed. Remove the fuse cover with a small flat head screw driver. Take out the fuse and replace with a new fuse of the same Amp. Replace the fuse cover and push back into place.



DISPOSAL INFORMATION



The European Directive 2012/19/EU on Waste Electrical and Electronic Equipment (WEEE), requires that old household electrical appliances must not be disposed of in normal unsorted municipal waste. Old appliances must be collected separately in order to optimise the recovery and recycling of the materials they contain and reduce the impact on human health and the environment. The crossed out “wheeled bin” symbol on the product reminds you of your obligation, that when you dispose of the appliance it must be separately collected. Consumers should contact their local authority or retailer for information concerning the correct disposal of their old appliance.

STATESMAN WARRANTY/GUARANTEE TERMS & CONDITIONS

THANK YOU FOR CHOOSING STATESMAN

As a valued customer we would like to offer you a **FREE 2-year warranty** to cover your product against any electrical or mechanical defects.

This means that in the unlikely event you develop a fault or problem with your product we will happily repair or replace the item free of charge.

To qualify for the guarantee, the product must be used for domestic household use only and in accordance with the instructions in the user manual. Any misuse of the product will result in the warranty being void.

The guarantee does not cover accidental damage, misuse, neglect, tampering or incorrect adjustment or installation.

The guarantee will be rendered invalid if the product is resold, has had its serial number or rating label removed (or has an invalid serial number or rating label), or if an unauthorised person has carried out any repairs or alterations.

The warranty does not cover accessories or consumable parts that require replacement under normal use. This includes shelving, dials, filters, belts and trays etc.

In the unlikely event of a breakdown please refer to the Troubleshooting Guide in your user manual and check all plugs, fuses and the electricity supply.

If you still require assistance, please contact our Customer Service Department on **01473 277 508** or write to us at the following address:

**Customer Service Department
38 Bluestem Road, Ransomes Industrial Estate, Ipswich, IP3 9RR**

Please quote the Product Code and the PO number on the rating label and give details of the exact fault. We will then decide whether to replace the item.

IMPORTANT NOTE: Before we arrange the replacement, you will be required to return a copy of your proof of purchase. Please retain your original.

If an item is replaced within the agreed warranty period, the warranty for the replacement item will be calculated from the purchase date of the original.

In the event that the product is inspected, and no fault is found, or the product is not within the guarantee period you will be charged for the repair and any carriage costs.

STATESMAN

kitchen appliances

**38 Bluestem Road, Ransomes Europark, Ipswich, IP3 9RR
EU: Castle Electrical Factors Ltd., Dundalk, A91 KA9R, IR**

01473 277 508

Disclaimer: Statesman operate a policy of continual improvement and development.
We therefore reserve the right to change/alter the specification and appearance of our appliances without prior notice.
All diagrams and images shown in this manual are for illustration purposes only.