

# STATESMAN

kitchen appliances

---



**L255W - White**  
**L255B - Black**  
**L255S - Silver**

**55CM UNDER COUNTER LARDER FRIDGE WHITE**

## Instruction Manual

Please read these instructions carefully before use and retain for future reference.  
Before switching on your appliance – Always check for any damage that may have been caused in transit.

## CONTENTS

Important Safety Instructions .....	3-4
Specification.....	5
Appliance Overview.....	6
Installation .....	6-8
Operating Instructions.....	9
Cleaning and Maintenance.....	10-11
Trouble Shooting Guide.....	12
Fuse Replacement .....	13
Disposal Information .....	14
Statesman Warranty Information.....	15

# IMPORTANT SAFETY INSTRUCTIONS

**Read and follow all of the instructions even if you feel you are familiar with the product, and find a place to keep this manual handy for future reference.**

**Important:** This product is intended for indoor domestic use, for food refrigeration storage only.

When using electrical appliances, basic safety precautions should always be followed:

- Do not operate the appliance with a damaged cord or plug, after it malfunctions or has been dropped or damaged in any way. All electrical repairs must be carried out by a qualified electrician. Inadequate repairs may result in a major source of danger for the user and invalidate the warranty.
- The operating voltage of the appliance is 220-240V at 50Hz. Check the voltage of the appliance matches the household voltage on the rating label and specification for further details.
- Use of an extension cord is not recommended with this product.
- This appliance can be used by children aged from 8 years and above if they have been given supervision or instruction concerning the use of the appliance in a safe way and understand the hazards involved.
- Cleaning and maintenance shall not be made by children.
- Keep the appliance and its cord out of reach of children.
- Children should not play with the appliance.
- This appliance can be used by persons with reduced physical, sensory or mental capabilities or lack of experience and knowledge if they have been given supervision or instruction concerning use of the appliance in a safe way and understand the hazards involved.
- Always unplug the appliance before attempting to move.
- When disconnecting from the electricity supply, pull the plug and not the cord.
- Do not store explosive substances such as aerosol cans with a flammable propellant in this appliance.
- Always keep the ventilation openings clear of obstruction. Should they become blocked, clear them straight away.
- The refrigerant of this product is R600a which is flammable. Ensure when moving the appliance or during installation that the cooling system does not get damaged.

**WARNING:** The appliance is heavy and care is needed when unpacking and moving it. Get extra help and only hold the appliance by the casing – never hold by the door or the trim.

**WARNING:** Risk of child entrapment.

Before disposal of the old appliance, make sure that any locking mechanisms have been broken off, doors have been removed but shelves have been left in so that children cannot easily climb inside. Also remove the plug so the appliance is unusable.

**WARNING:** Risk of fire / flammable materials.

- When positioning the appliance, ensure the supply cord is not trapped or damaged.
- Do not locate multiple portable socket-outlets or portable power supplies at the rear of the appliance.

- Children aged from 3 to 8 years are allowed to load and unload refrigerating appliances.

To avoid contamination of food, pay attention to the following:

- opening the door for long periods can cause a significant increase of the temperature in the compartments of the appliance; clean regularly surfaces that can come in contact with food and accessible drainage systems;
- clean water tanks if they have not been used for 48 hours; flush the water system connected to a water supply if water has not been drawn for 5 days;
- store raw meat and fish in suitable containers in the refrigerator so that it is not in contact with or cannot drip onto other food;
- two-star frozen-food compartments are suitable for storing pre-frozen food, storing or making ice-cream and making ice cubes;
- one-, two- and three-star compartments are not suitable for the freezing of fresh food;
- if the refrigerating appliance is left empty for long periods, switch off, defrost, clean, dry and leave the door open to prevent mould developing within the appliance.

The table below contains general guidelines on the storage of food in refrigerated appliances.

Refrigerator location	Type of food
Fridge door	<ul style="list-style-type: none"> <li>• Foods with natural preservatives, such as jams, juices, drinks, condiments.</li> <li>• Do not store perishable foods.</li> </ul>
Crisper bin (salad drawer)	<ul style="list-style-type: none"> <li>• Fruits, herbs and vegetables should be placed separately in the crisper bin.</li> <li>• Do not store bananas, onions, potatoes, garlic in the refrigerator.</li> </ul>
Fridge shelf – bottom chiller bin	<ul style="list-style-type: none"> <li>• Raw meat, poultry, fish (for short-term storage).</li> </ul>
Fridge shelf – middle	<ul style="list-style-type: none"> <li>• Dairy products, eggs.</li> </ul>
Fridge shelf – top	<ul style="list-style-type: none"> <li>• Foods that do not need cooking, such as ready-to-eat foods, deli meats, leftovers.</li> </ul>
Freezer drawer/shelf	<ul style="list-style-type: none"> <li>• Foods for long-term storage.</li> <li>• Bottom drawer/shelf for raw meat, poultry, fish.</li> <li>• Middle drawer/shelf for frozen vegetables, chips.</li> <li>• Top drawer/shelf for ice cream, frozen fruit, frozen baked goods.</li> </ul>

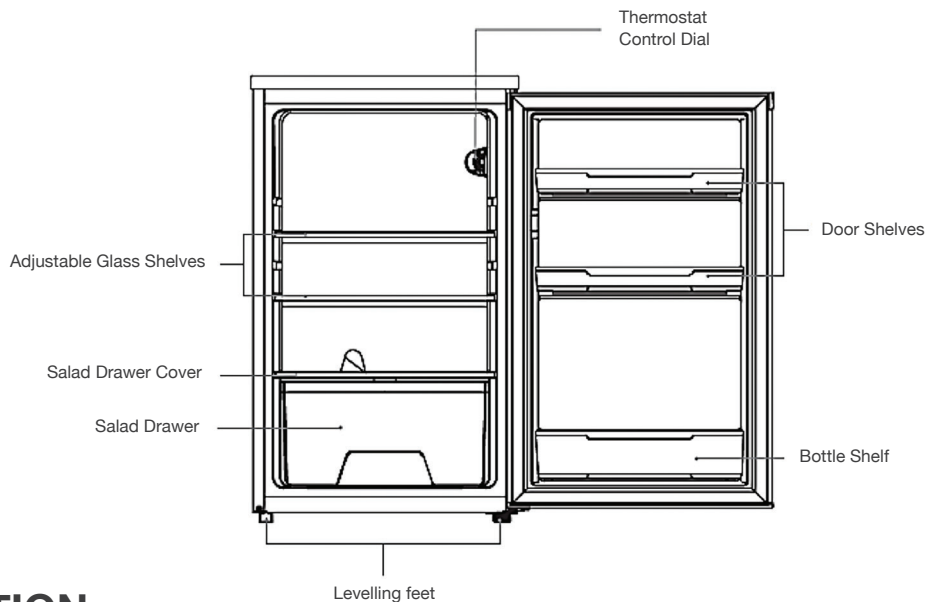
## SPECIFICATION

Supplier Name / Trade Mark	Statesman
Model Number	L255W / L255B / L255S
Category Type	Refrigerator with one or more fresh-food storage compartments
Energy Efficiency Class	E
Annual Energy Consumption	90kWh/annum
Freezing Capacity	N/A
Fridge Storage Volume (Litre) and Applicable Star Rating Compartment	131L
Freezer Storage Volume (Litre)	N/A
Applicable Star Rating Compartment	N/A
Refrigeration System (Frost Free, Static, Totally No Frost)	Static
Temperature Rise Time	N/A
Climate Class	ST/N/SN
This appliance is intended to be used at an ambient temperature between “10” (lowest temperature) °C and “38”(highest temperature) °C	
Noise Emission (dB)	39(dB)
Built-in Appliance	N/A
Wine Storage Appliance	N/A
Voltage (V)	220-240V~
Wattage Power (W)	40W
Frequency (Hz)	50Hz
Power Source	AC

### Ambient Room Temperature Limits

Class	Symbol	Ambient average temperature
Extended temperature	SN	+10 to +32
Temperature	N	+16 to +32
Subtropical	ST	+16 to +38
Tropical	T	+16 to +43

# APPLIANCE OVERVIEW



## INSTALLATION

### Location and air circulation

- The appliance must stand vertically on a flat, even surface, to level the appliance use the levelling feet by turning them until the appliance is as level as possible.
- It is not recommended to stand the appliance on a carpeted surface.
- This appliance has been designed to operate in ambient temperatures between 10°C and 38°C.
- It is not recommended to place this appliance in a room where the temperature is likely to drop below 5°C for prolonged periods, as the internal appliance temperature will not be maintained.
- The appliance should not be placed near sources of heat e.g. cookers, radiators, direct sunlight or in any unheated rooms e.g. garages, or outhouses, as extreme temperatures will affect the performance of your appliance.
- Do not expose the appliance to damp conditions, open air or rain.
- Do not lift the appliance by the pipes or the door when moving.
- It is not recommended to place the appliance in a wall recess, fitted cabinet or furniture as this will not allow adequate ventilation and cause a potential fire hazard.
- Allow 25mm of clearance space at the sides of the appliance and 20mm above the appliance.
- It is not recommended to place the appliance directly against the wall, allow at least a 15mm clearance space at the rear.
- Do not place the appliance in a wall recess, fitted cabinet or furniture as this will not allow adequate ventilation and cause a potential fire hazard.

Providing you follow the recommended ventilation requirements you will:

- Increase the life of the appliance.
- Minimise the risk of condensation on the outside of the appliance.
- Minimise operating noises caused by vibration.

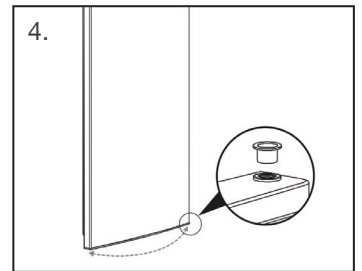
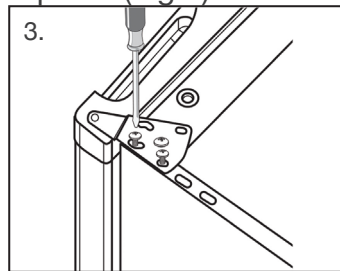
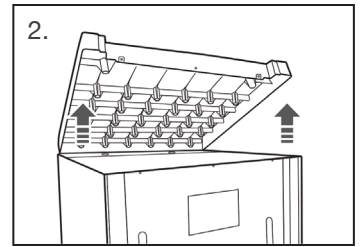
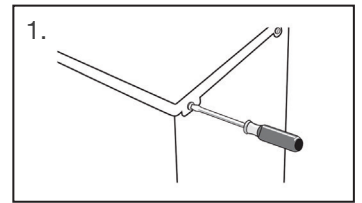
### Reverse the Door

The appliance door can be fitted to open to either the left or the right depending on its location. The appliance will have to be tilted and supported in order to carry this out. It is advisable to get some help during this procedure.

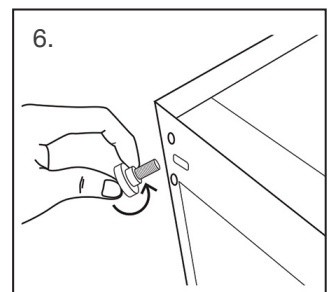
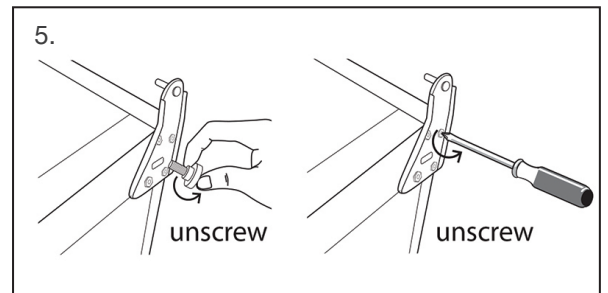
**Important:** Do not lay the appliance flat as this may damage the coolant system. Take care when fitting and tightening screws.

To change the direction of the door, please follow these instructions:

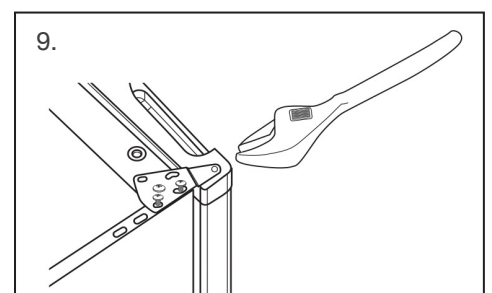
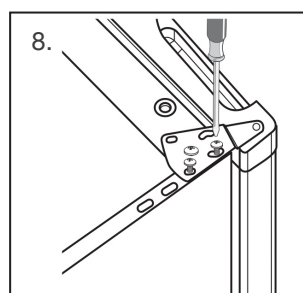
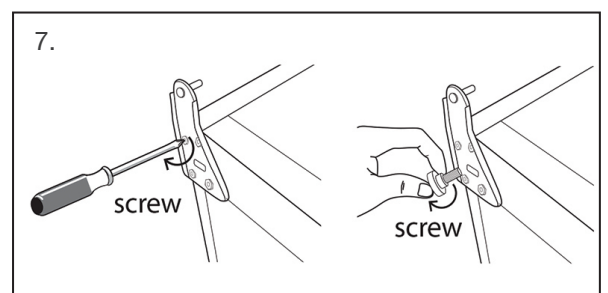
1. Ensure the appliance is unplugged and empty.
2. Remove the 2 Screws on the back of the top cover (Fig 1).
3. Lift the rear of the lid and push forward to remove from the front locators. The top hinge now is accessible (Fig 2).
4. Unscrew the top door hinge located on the top of the door and then remove the top hinge that is holding the door in place (Fig 3).
5. With help, carefully tilt the unit backwards and rest the unit on something solid to stop slipping.
6. Lift the door off the hinge pin and place in a safe place where it will not get damaged.



7. Remove the bottom bushing and bottom bushing cap and fit them on the opposite side (Fig 4).
8. Unscrew the bottom hinge (Fig 5).
9. Remove the levelling foot and fit on the opposite side (Fig 6).
10. Screw the bottom hinge on the opposite side loosely (Fig 7).
11. Carefully slide the door on to the bottom hinge pin.
12. Screw the top hinge loosely (Fig 8).

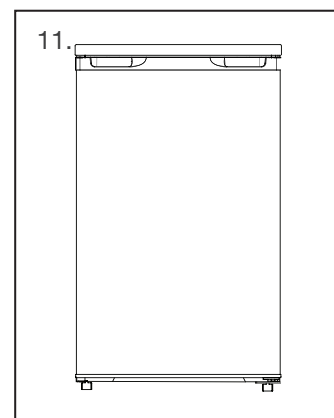
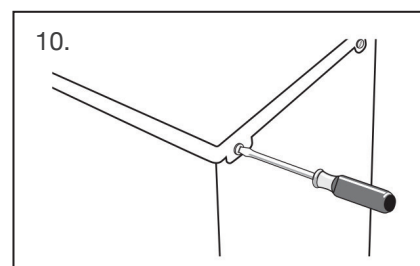


13. Check the fridge door is aligned horizontally and vertically so that the seals are closed on all sides.
14. Tighten the top hinge. Use a spanner to tighten it if necessary (Fig 9).





15. Put the top cover back and screw it into place securely (Fig 10).
16. With the door closed, check that the door is aligned horizontally and vertically and that the seals are closed on all sides before finally tightening the bottom hinge (Fig 11).
17. Re-adjust the levelling feet as needed.
18. Allow 5 hours for the appliance to stand upright before turning on the appliance to allow coolant gases time to settle after the appliance is in place.





# OPERATING INSTRUCTIONS

## Before using your Appliance

- Allow 5 hours for the appliance to stand upright before turning on to allow coolant gases time to settle after the appliance is in place.
- Before placing food in the appliance turn on and wait 24 hours, this is to make sure it is working correctly and also to allow for the optimal internal temperature to be reached.
- The interior of the appliance needs to be cleaned prior to use by wiping with a soft cloth and using warm water. Wipe appliance completely dry before replacing any shelves or salad drawers.

## Using your Appliance

- Once dry, plug the appliance into the electricity supply.
- Adjust the temperature control dial which is located inside the appliance to Setting 4, this is the recommended setting to use in a room with an average ambient temperature of 20°C.
- Keep the food packed, wrapped or covered.
- For hygiene reasons, always wrap food using a suitable packaging material, before storing in your appliance to avoid contact with the surface of the appliance.
- Do not place food directly against the rear wall.

## Adjusting the Temperature

- The ideal internal temperature of your appliance should be between 0°C to 5°C. This is regulated by the temperature control dial located internally at the top of the appliance.
- There are 7 settings on the temperature control dial, with Setting 6 being the coldest, Setting 1 being the warmest and Setting 0 being off.
- The temperature control should be set to Setting 4 when operating at normal room temperature (between 16°C and 38°C).
- Avoid setting the thermostat too high, as this may reduce the temperature to a point where some food begins to freeze. If this happens turn down the thermostat slightly.
- The temperature in the appliances compartment can be monitored by using a fridge thermometer. DO NOT USE a Mercury filled thermometer, as a breakage would cause a health hazard.

# CLEANING AND MAINTENANCE

**IMPORTANT:** Switch off the electricity supply and remove the plug from the mains socket before cleaning.

## Interior

- The interior of the refrigerator should be cleaned regularly to avoid odours.
- Remove all food from the appliance and cover to help keep cool.
- Remove all the shelves and salad drawer carefully from the appliance and wash in lukewarm water with a soft cloth and dry thoroughly. Never replace the shelves or salad drawer into the appliance if wet.
- Use a soft cloth or sponge to clean the inside of the refrigerator, with two tablespoons of baking soda and a quart of warm water. Rinse with water and wipe clean.
- For areas that are difficult to clean in the refrigerator (such as narrow gaps or corners), it is recommended to wipe them regularly with a soft rag, soft brush, etc. and when necessary, combined with some auxiliary tools (such as thin sticks) to ensure no contaminant accumulation in these areas.
- Open the door and allow the interior to dry naturally before replacing shelves and salad drawer.
- Plug in and switch on and allow the temperature in the appliance to drop back to an adequate temperature.
- Replace the food in the appliance.

**Important:** Avoid getting water into the electric components of the appliance i.e. the thermostat, as this may damage your appliance.

## Exterior

- Use a clean, soft cloth dampened in soapy water to wipe the exterior surface of the appliance and dry thoroughly.
- Use a vacuum cleaner to remove dust from underneath the appliance and from around the compressor which is situated at the back of the appliance, regularly to maintain adequate ventilation.
- Use caution not to damage the coolant system.

**Important:** Do not use abrasive cloths, powders, household cleaners, bleach or wax polish to clean the appliance as these can leave a smell in the appliance and can damage the exterior.

## Door Seal

Check the door seal regularly to make sure there are no debris. Use a clean, damp soft cloth to wipe the door seal and in between the creases, avoid damaging the door seal as this will affect the performance of your appliance.

## Drainage Channel

- The drainage channel must be cleaned regularly to prevent a build-up of impurities; this can be found on the interior back wall of your appliance.
- Use a damp clean cloth and wipe the channel clean, then use a pipe cleaner or similar flexible object to clean the drainage hole to prevent blockages.

### **Going Away**

If you are going away and do not want to leave the appliance left on, switch off at the mains socket and remove the plug ensuring not to pull the cord. Remove any food and follow the cleaning instructions in the “Cleaning and Maintenance” section.

**Important:** Leave the door ajar as this will prevent odours and mould accumulating in the appliance and will allow the appliance to dry completely.

### **Power Cut**

In the event of a power cut keep the appliance door closed to maintain the temperature inside.

### **Operating Sounds**

The cooling gas which circulates in the cooling circuit may make a slight noise (bubbling sound) even when the compressor is not running. Do not worry this is quite normal.

If these sounds are different check that:

- The appliance is level.
- Nothing is touching the back of the appliance.
- The contents of the appliance is not vibrating.

### **Light Replacement**

The light is an energy efficient, long life LED, therefore should not need replacing throughout the life of the product. However if it does, it is advised to contact a qualified technician.

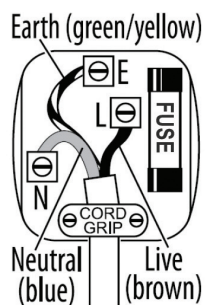
1. Remove the light cover
2. Loosen the thermostat dial and fastening screw, and remove the thermostat box assembly
3. Remove the connector
4. Remove the light

## TROUBLE SHOOTING GUIDE

If you are having problems with your appliance, please use our trouble shooting guide below. If you are unable to resolve the issue using this guide please ring our Customer Service Department on 01473 277 508. Please have the model code and purchase information available.

<b>Fault</b>	<b>Possible Cause</b>	<b>Solution</b>
Appliance does not work.	Temperature control dial is set to “OFF”.	Turn the temperature control dial to settings 1-6 to turn on the appliance.
	Mains plug is not plugged in or is loose.	Insert mains plug.
	Fuse has blown or is defective.	Check fuse, replace if necessary.
	Socket is defective.	Mains malfunctions are to be corrected by an electrician.
The food is too warm.	Temperature is not properly adjusted.	Please look in the ‘Adjusting the Temperature’ section.
	Door was open for an extended period.	Open the door only as long as necessary.
	A large quantity of warm food was placed in the appliance within the last 24 hours.	Turn the temperature control dial to a colder setting temporarily.
	The appliance is near a heat source.	Please look in the ‘Installation’ section.
Appliance cools too much.	Temperature is set too cold.	Turn the temperature control dial to a warmer setting temporarily.
Unusual noises.	Appliance is not level.	Re-adjust the feet.
	The appliance is touching the wall or other objects.	Move the appliance slightly.
	A component e.g. a pipem on the the rea of the appliance is touching another part of the appliance on the wall.	If necessary, carefully bend the component out of the way.
Water on the floor.	Water drain hole is blocked.	See the ‘Cleaning and Maintenance’ section.
Side panels are hot.	It’s normal. Heat exchange parts are in the sides.	Use gloves to touch sides.

## MAINS PLUG FUSE REPLACEMENT



### Fuse Replacement (Class I)

This appliance must be earthed. Remove the central screw on the plug and open the shell. Take out the fuse and replace with a new fuse of the same Amp. Install the shell again and tighten the screws.

## DISPOSAL

The European Directive 2012/19/EU on Waste Electrical and Electronic Equipment (WEEE), requires that old household electrical appliances must not be disposed of in normal unsorted municipal waste.

Old appliances must be collected separately in order to optimise the recovery and recycling of the materials they contain and reduce the impact on human health and the environment.

The crossed out “wheeled bin” symbol on the product reminds you of your obligation, that when you dispose of the appliance it must be separately collected. Consumers should contact their local authority or retailer for information concerning the correct disposal of their old appliance.



## STATESMAN WARRANTY/GUARANTEE TERMS & CONDITIONS

### THANK YOU FOR CHOOSING STATESMAN

As a valued customer we would like to offer you a **FREE 2-year warranty** to cover your product against any electrical or mechanical defects.

This means that in the unlikely event you develop a fault or problem with your product we will happily repair or replace the item free of charge.

To qualify for the guarantee, the product must be used for domestic household use only and in accordance with the instructions in the user manual. Any misuse of the product will result in the warranty being void.

The guarantee does not cover accidental damage, misuse, neglect, tampering or incorrect adjustment or installation.

The guarantee will be rendered invalid if the product is resold, has had its serial number or rating label removed (or has an invalid serial number or rating label), or if an unauthorised person has carried out any repairs or alterations.

The warranty does not cover accessories or consumable parts that require replacement under normal use. This includes shelving, dials, filters, belts and trays etc.

In the unlikely event of a breakdown please refer to the Troubleshooting Guide in your user manual and check all plugs, fuses and the electricity supply.

If you still require assistance, please contact our Customer Service Department on **01473 277 508** or write to us at the following address:

**Customer Service Department**  
**38 Bluestem Road, Ransomes Industrial Estate, Ipswich, IP3 9RR**

Please quote the Product Code and the PO number on the rating label and give details of the exact fault. We will then decide whether to replace the item.

**IMPORTANT NOTE: Before we arrange the replacement, you will be required to return a copy of your proof of purchase. Please retain your original.**

**If an item is replaced within the agreed warranty period, the warranty for the replacement item will be calculated from the purchase date of the original.**

In the event that the product is inspected, and no fault is found, or the product is not within the guarantee period you will be charged for the repair and any carriage costs.



**STATESMAN**  
kitchen appliances

**UK Address: 38 Bluestem Road, Ransomes Europark, Ipswich, IP3 9RR**  
**EU Address: Castle Electrical Factors Ltd., Dundalk, A91 KA9R, IR**

**01473 277 508**